



SAMPSON COUNTY
911 & ES
FACILITIES

CLINTON,
NORTH CAROLINA

CONSTRUCTION
DOCUMENTS

CASEWORK
ELEVATIONS

DATE	12.04.2020	
PROJECT NO	20003	
REVISIONS		
NUM.	DATE	DESCRIPTION:

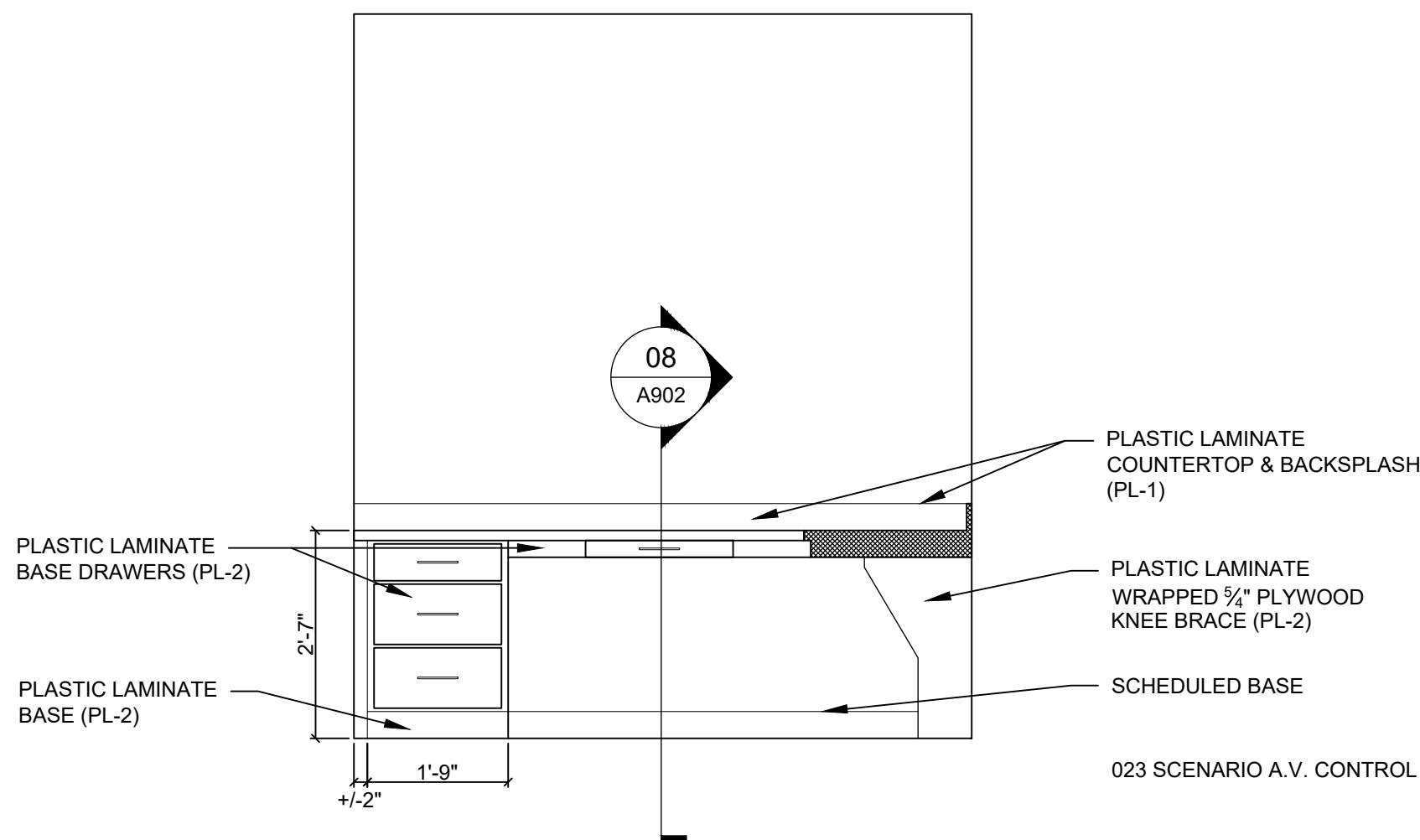
THIS DRAWING IS THE PROPERTY OF ADW ARCHITECTS, P.A. AND SHALL NOT BE REPRODUCED OR COPIED IN WHOLE OR IN PART. IT SHALL NOT BE USED ON ANY OTHER PROJECT OR GIVEN TO ANY OTHER COMPANY OR AGENCY WITHOUT THE CONSENT OF ADW ARCHITECTS, P.A.

12.4.20

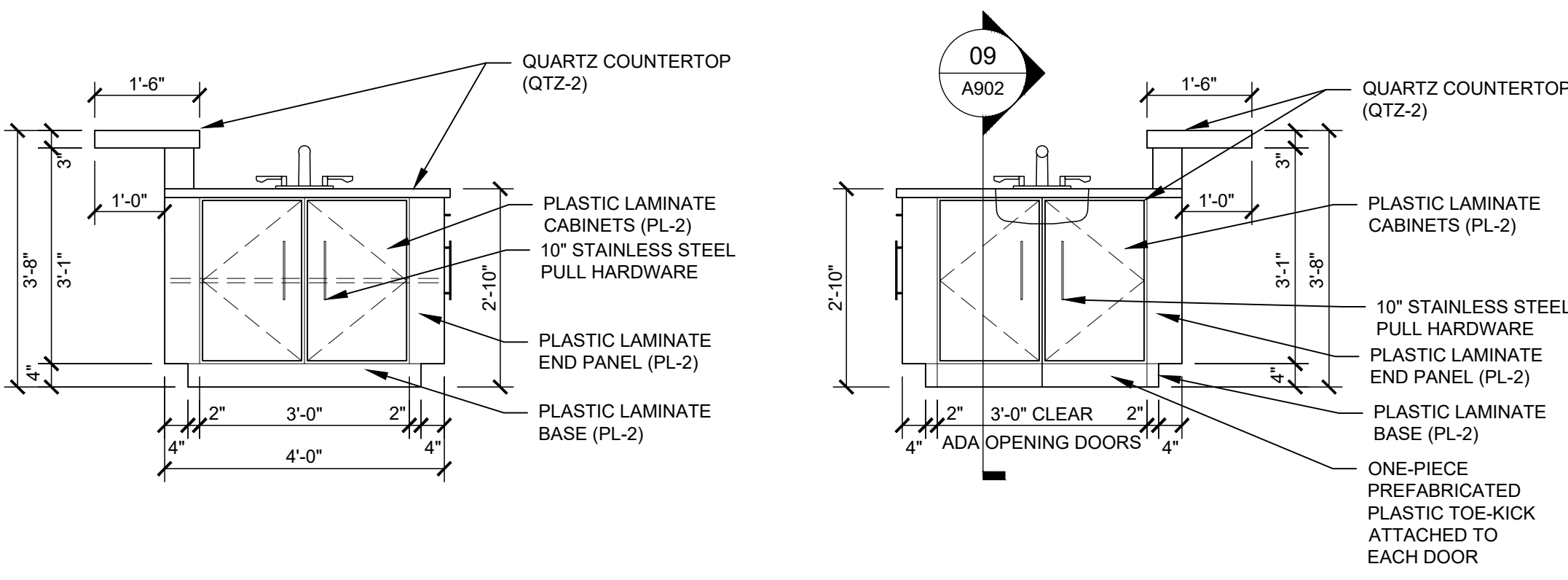
SEAL

SHEET NUMBER

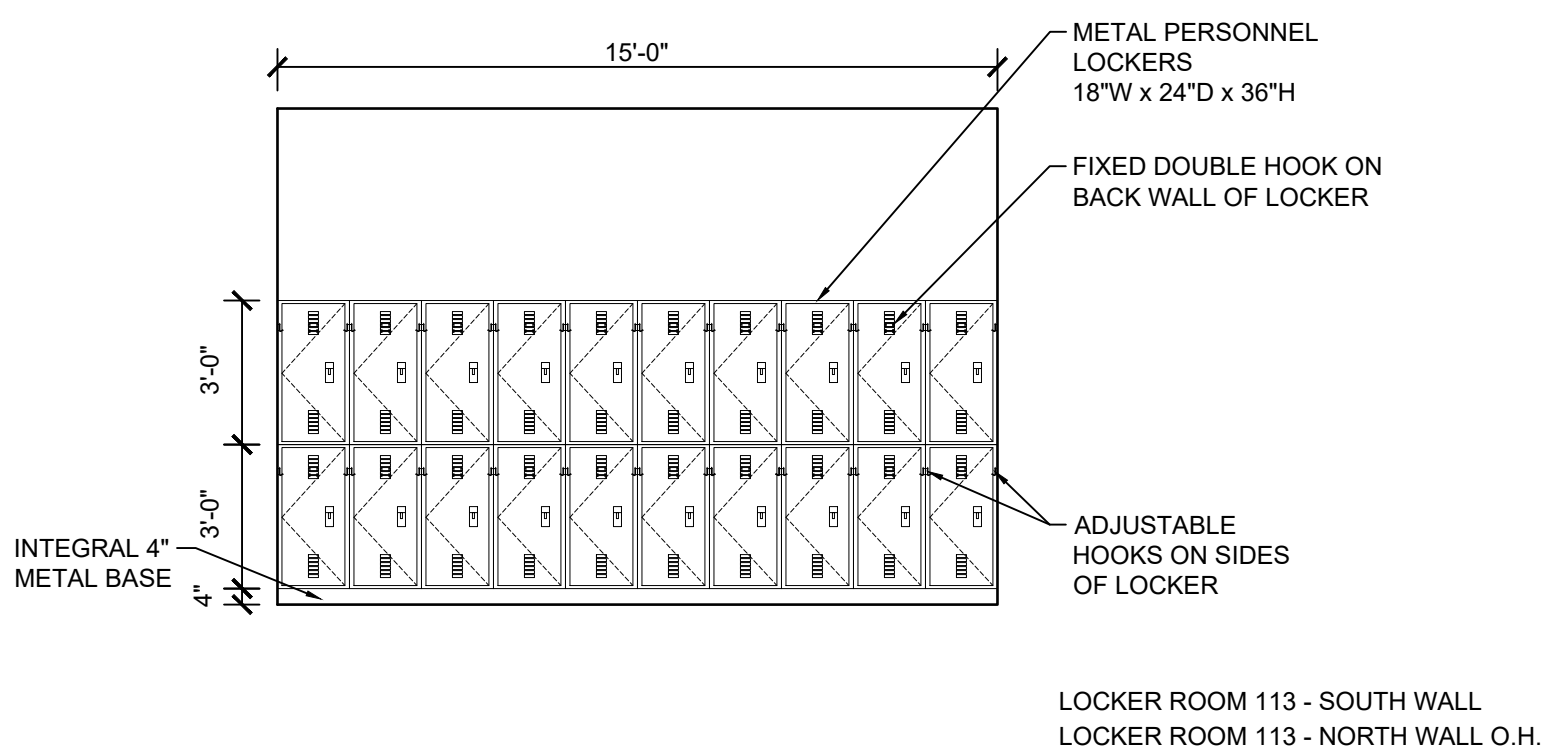
A901



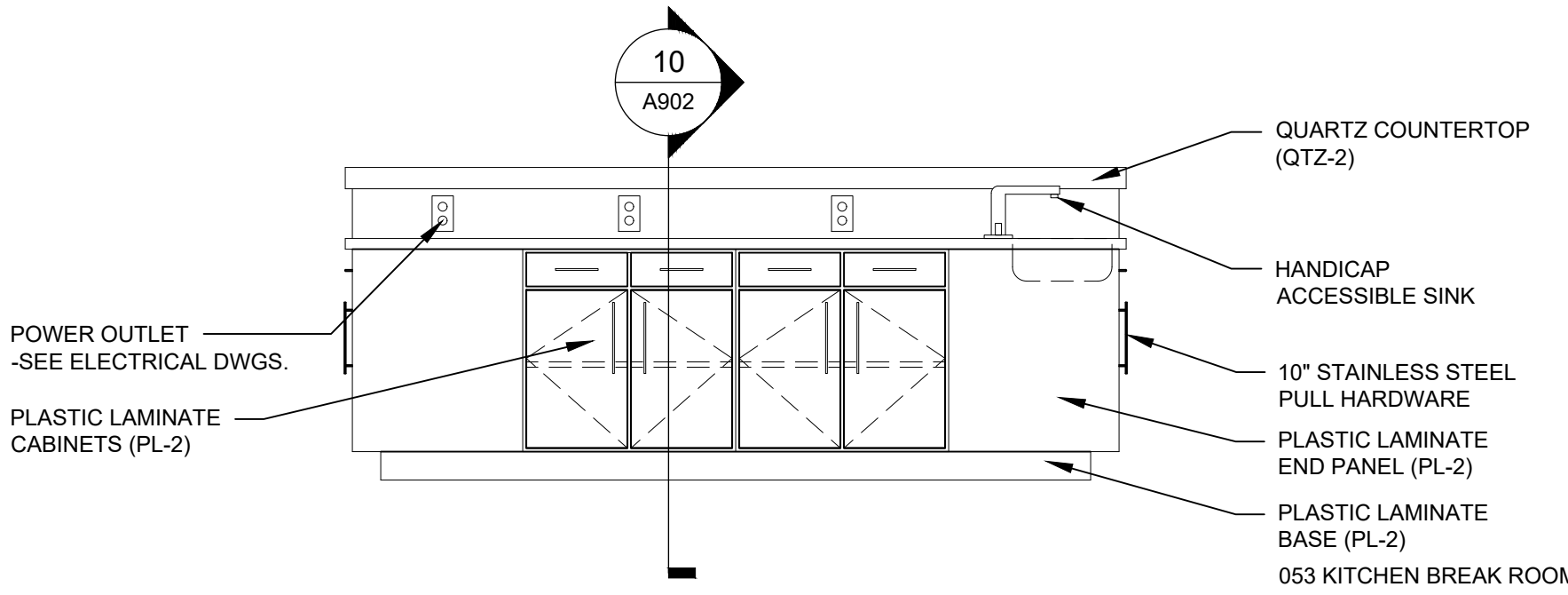
CASEWORK ELEVATION SCALE: 1/2" = 1'-0" 4



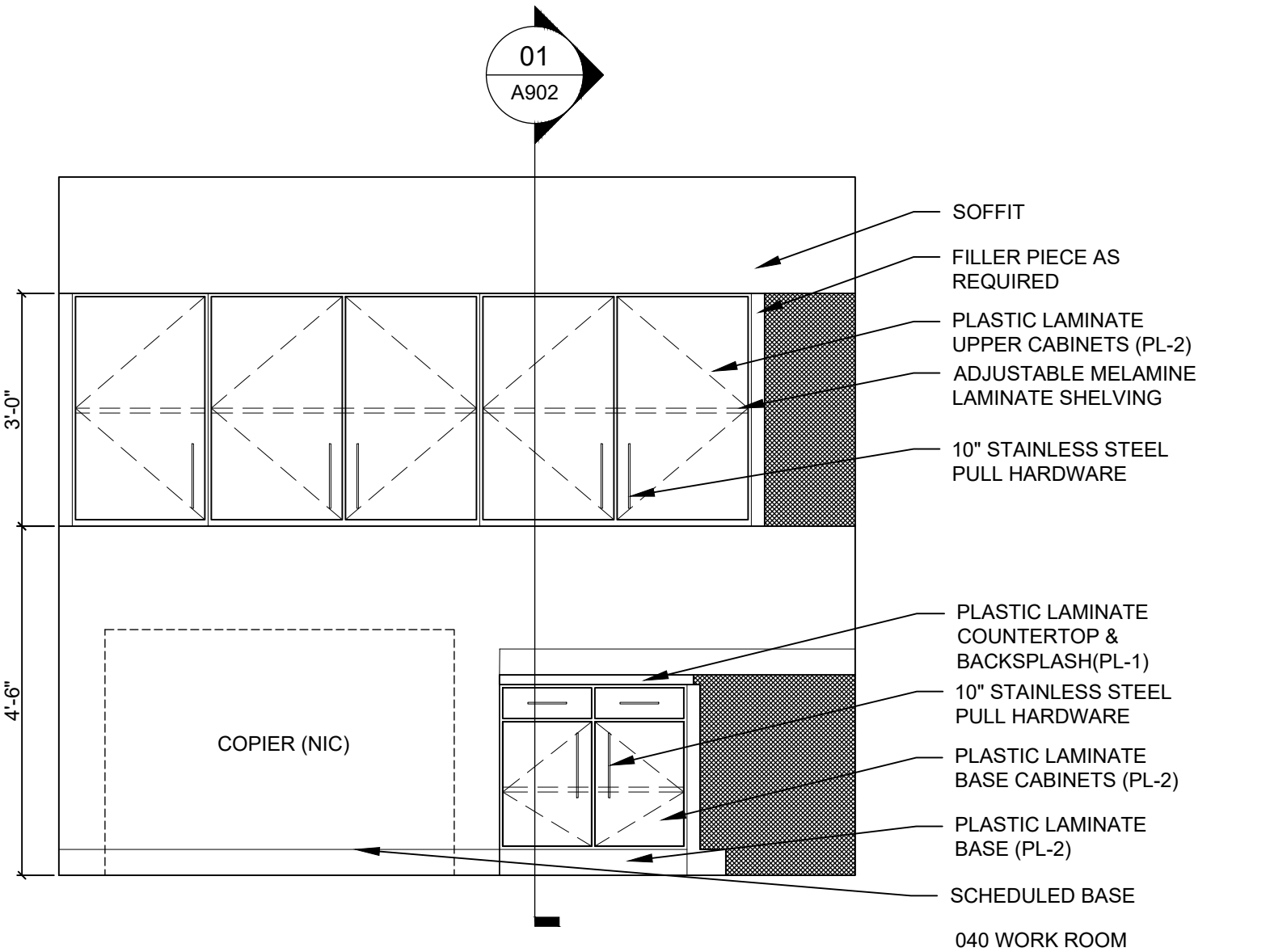
CASEWORK ELEVATION SCALE: 1/2" = 1'-0" 8



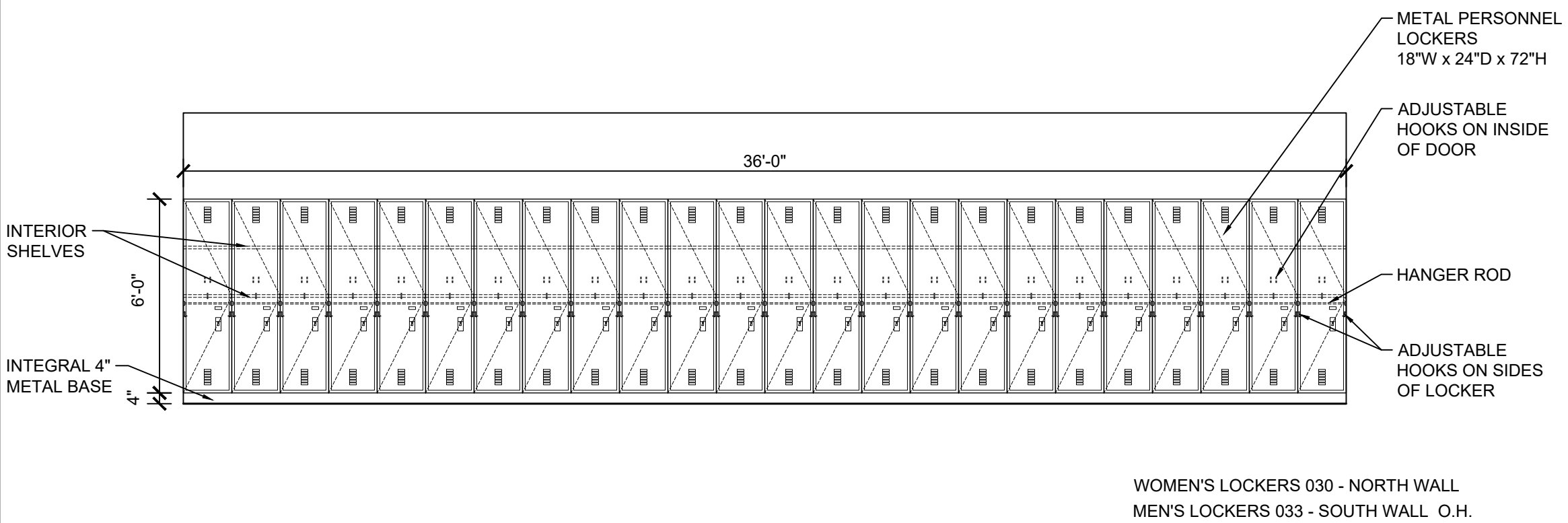
LOCKERS ELEVATION SCALE: 1/4" = 1'-0" 12



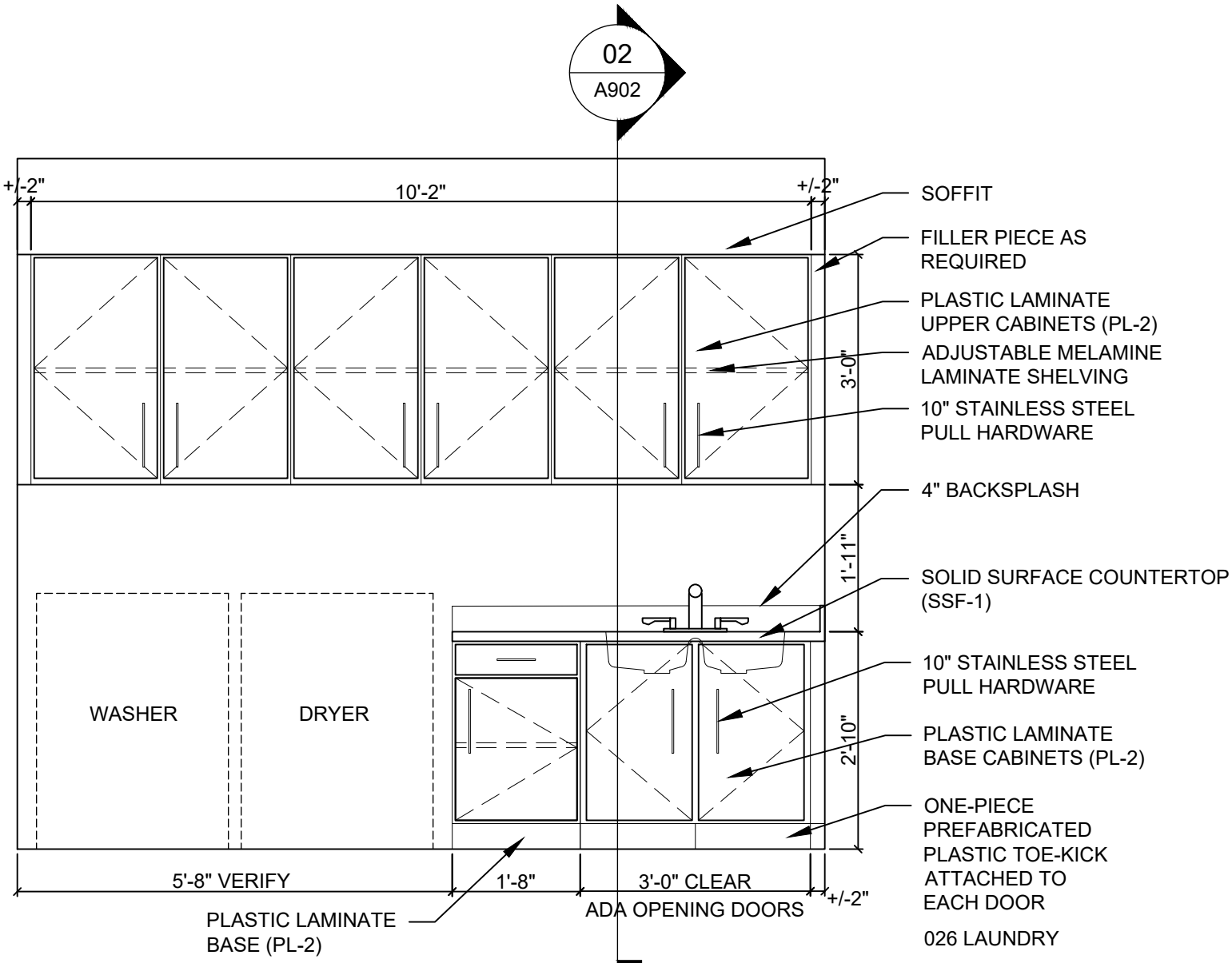
CASEWORK ELEVATION SCALE: 1/2" = 1'-0" 7



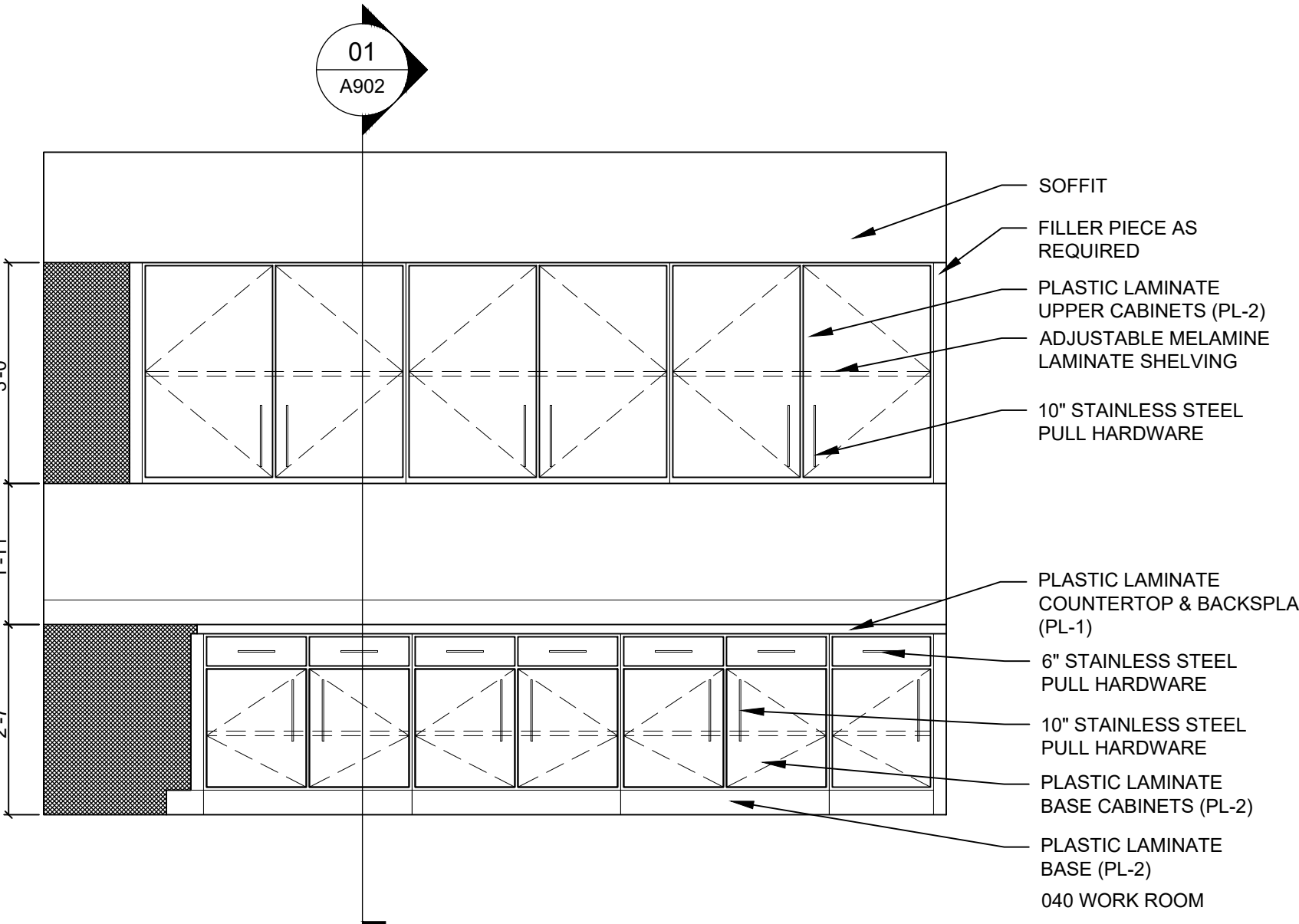
CASEWORK ELEVATION SCALE: 1/2" = 1'-0" 3



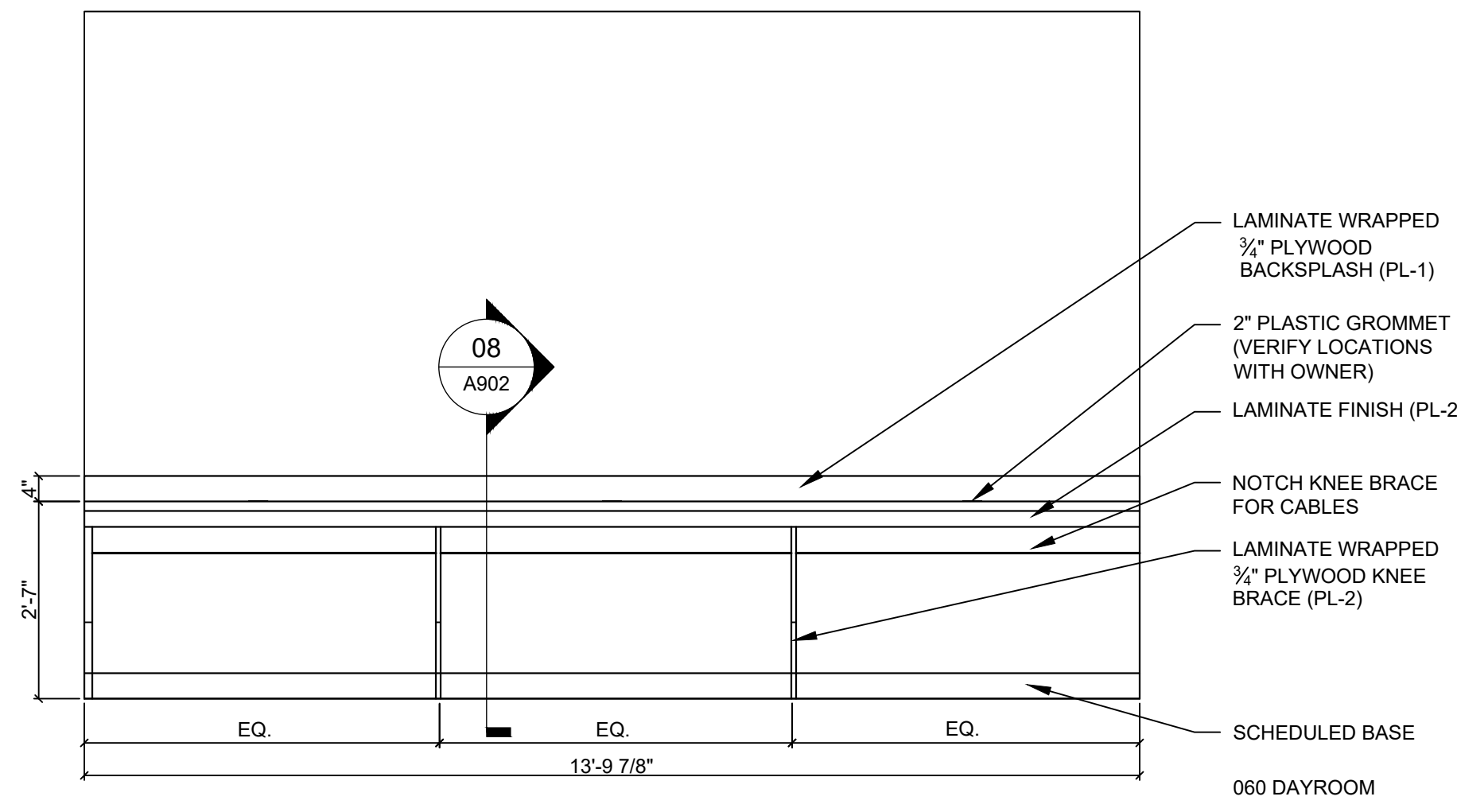
LOCKERS ELEVATION SCALE: 1/4" = 1'-0" 11



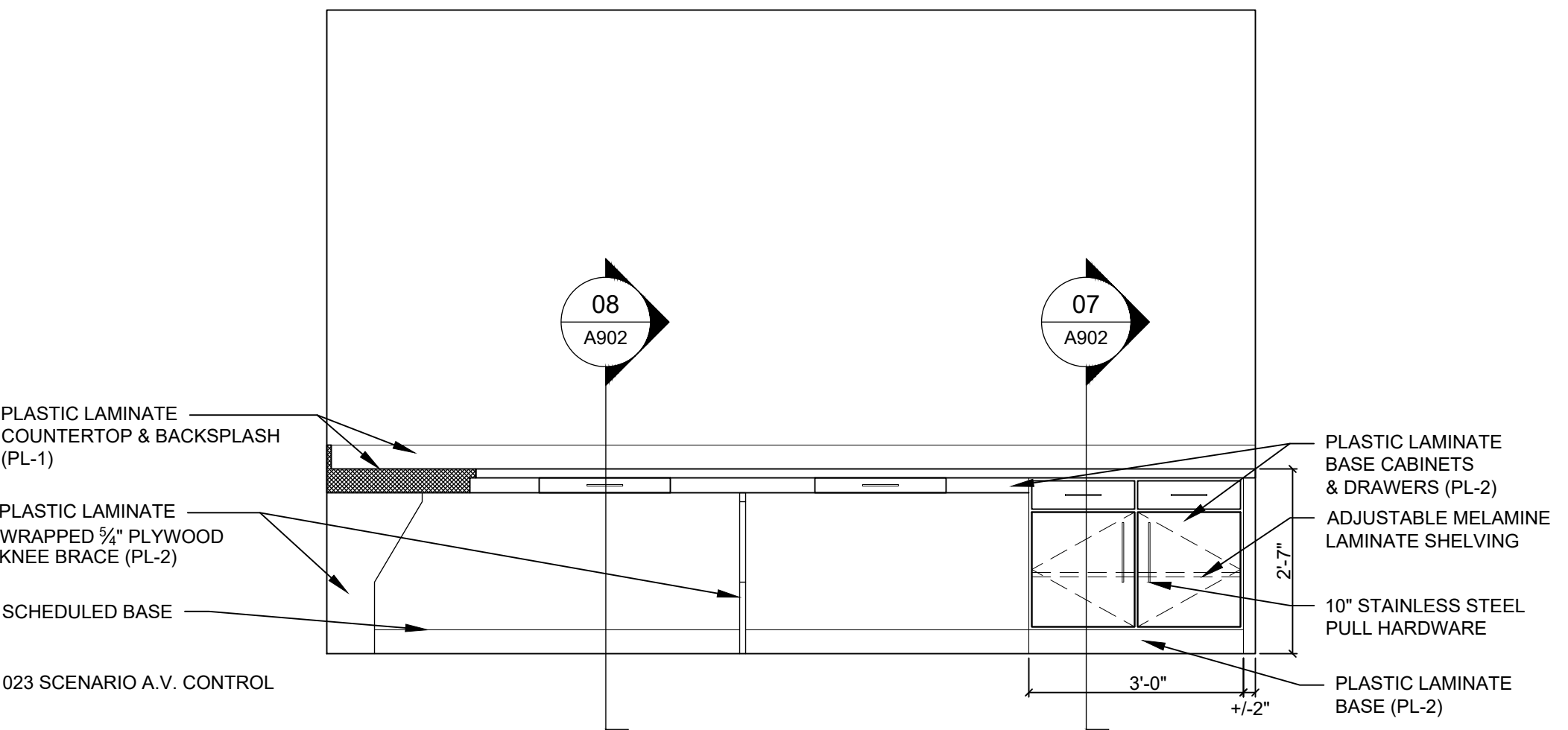
CASEWORK ELEVATION SCALE: 1/2" = 1'-0" 6



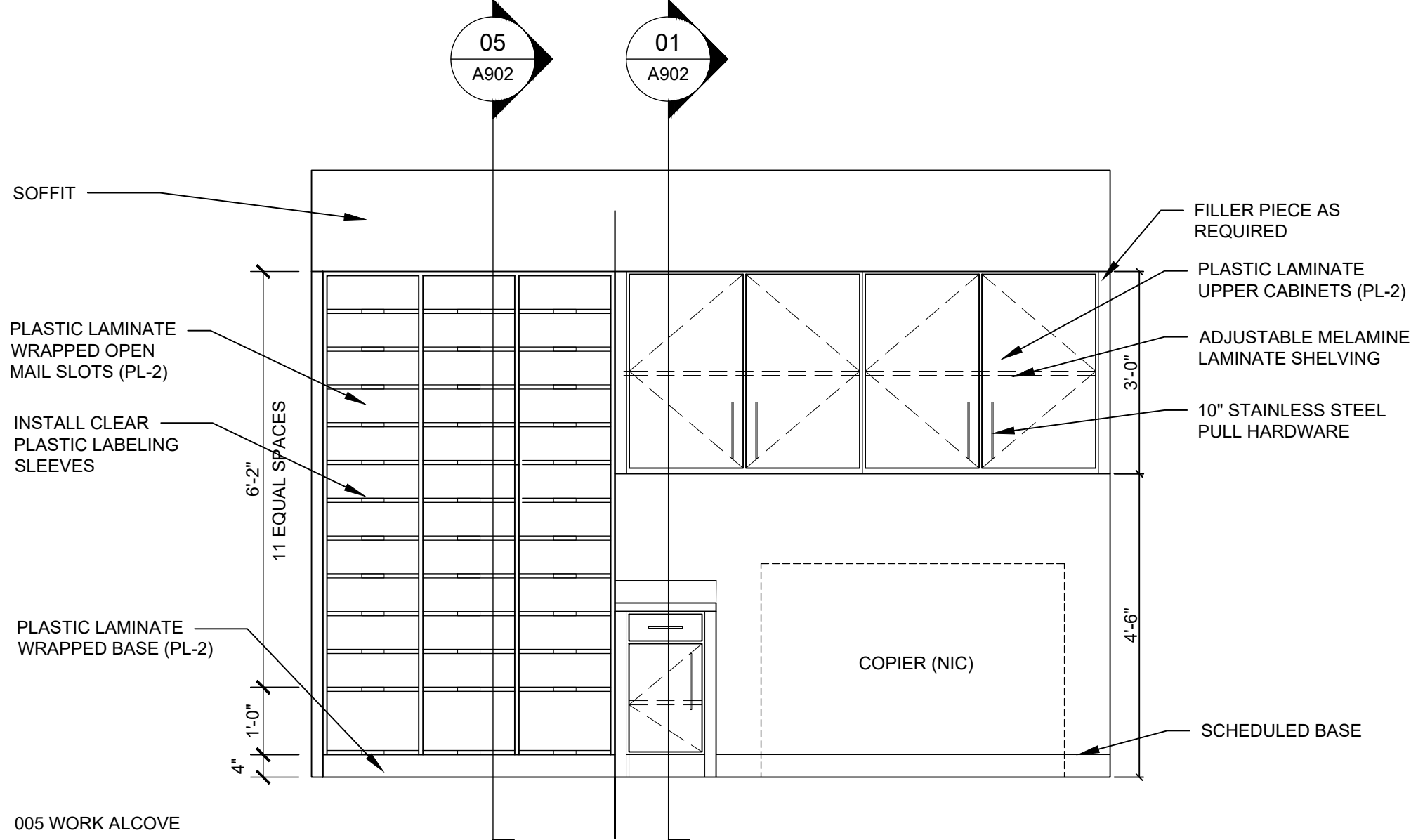
CASEWORK ELEVATION SCALE: 1/2" = 1'-0" 2



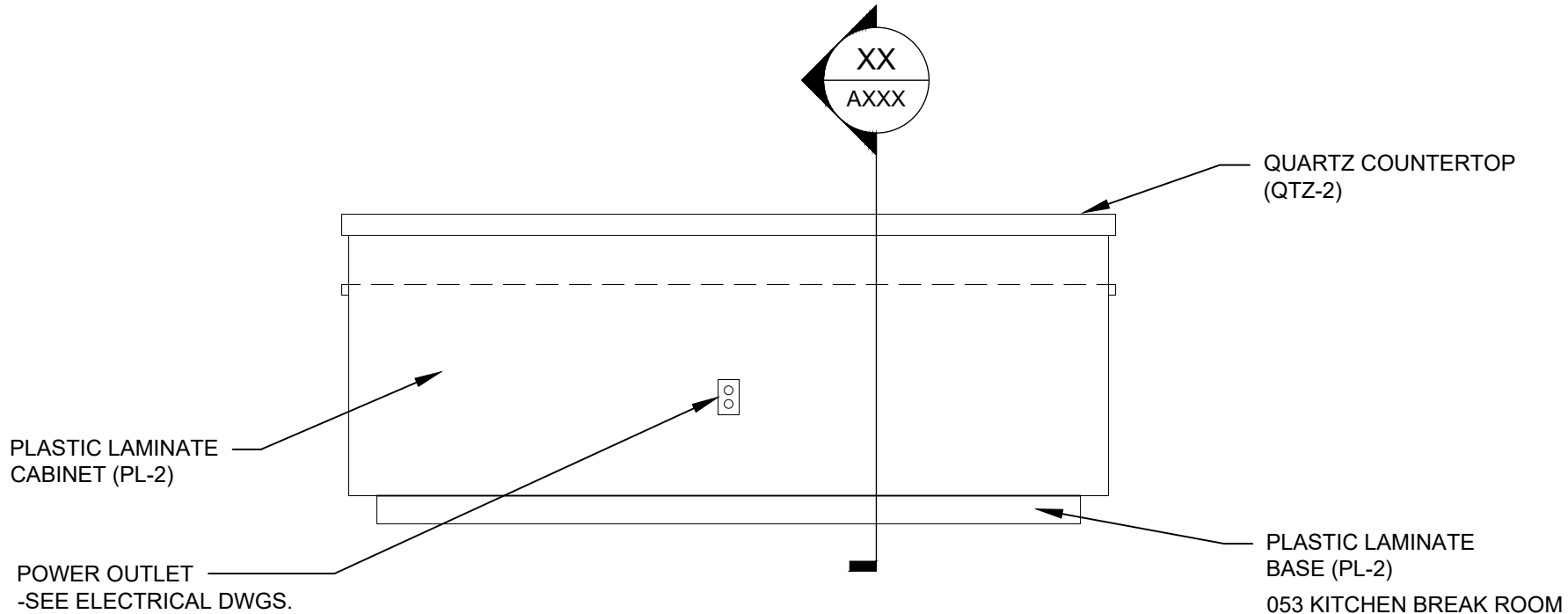
CASEWORK ELEVATION SCALE: 1/2" = 1'-0" 10



CASEWORK ELEVATION SCALE: 1/2" = 1'-0" 5



CASEWORK ELEVATION SCALE: 1/2" = 1'-0" 1



CASEWORK ELEVATION SCALE: 1/2" = 1'-0" 9